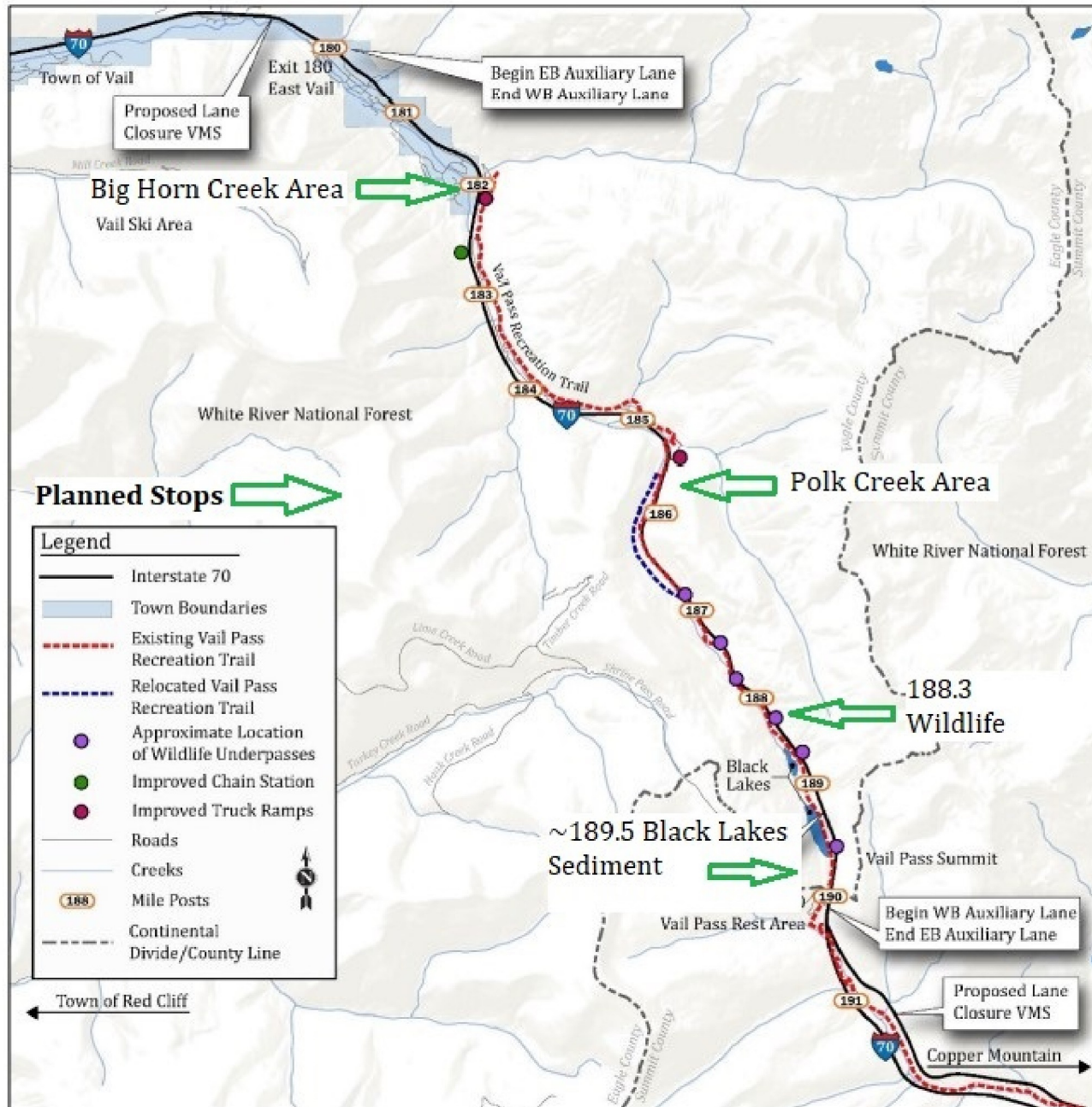
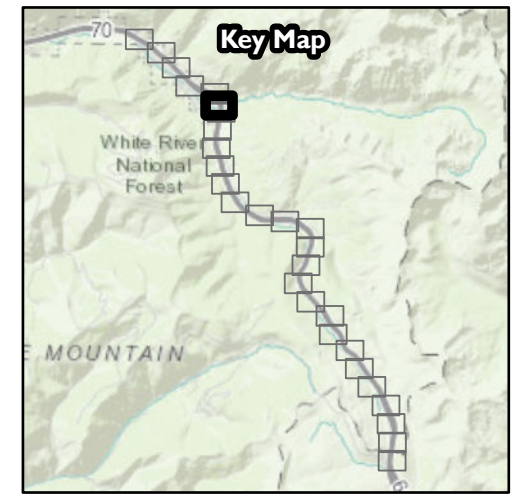
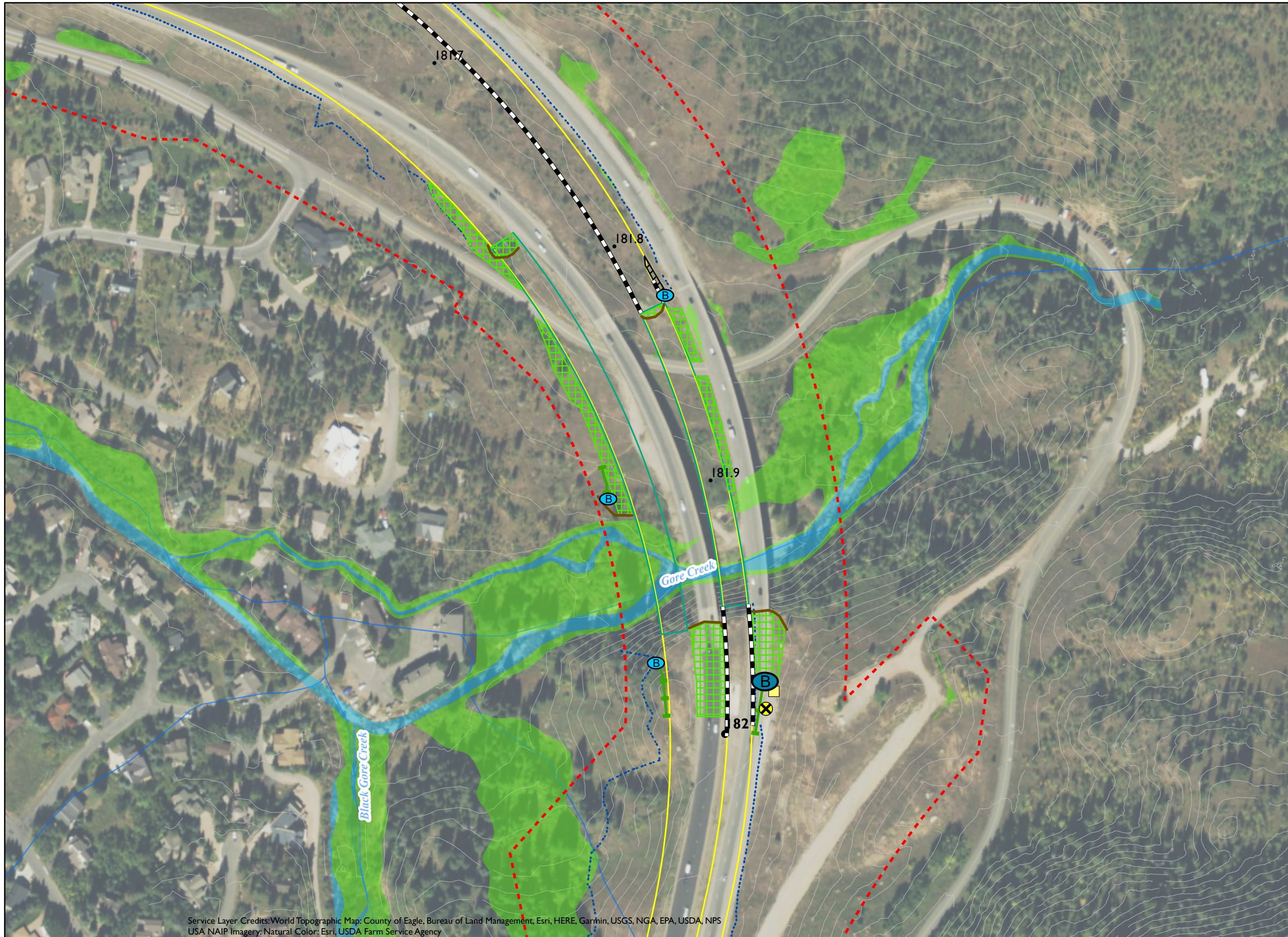


**West Vail Pass SWEEP ITF #6: Field Trip Agenda**  
**September 27, 1021**

1. Meet at recreation parking at MP 190 exit near rest area at top of Vail Pass at 12:30 pm.  
Consolidate rides. (CDOT requires that masks be worn when more than one person is in a vehicle.)
  2. Stop #1: Black Lakes area. Receive handouts. Discuss Sediment Control Measures near Black Lakes.
  3. Stop #2: Wildlife Crossing at MP 188.3. Discuss CMs to protect crossing.
  4. Stop #3: Polk Creek Area. Discuss moving bridges to east, away from Black Gore Creek, rundowns to reduce erosion, sediment ponds and sand windrow management below the bridges.
  5. Stop #4: Big Horn Road Area: Discuss SCAP Map Book and more windrow management under bridges.
  6. Return to parking area at MP 190.
- Finish by 3:00 pm.

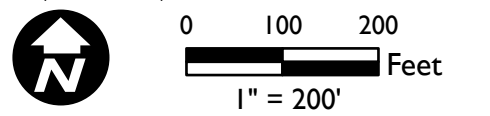
# SWEEP ITF Field Trip Stops





- Infrastructure\***
- Milepost
  - Milepost (tenth)
  - - - ROW - Existing
  - - - Existing Contours - 10ft
  - - - Trail Alignment
  - - - Top of Cut/Toe of Fill
  - Bridges
  - Guardrails
  - Walls
  - Edge of Road
  - Jersey Barriers
- Environmental\***
- Wildlife Underpasses
  - Open Water
  - Wetland
- Existing Control Measures**
- Sediment Basins
- Ⓟ Small
  - Ⓛ Medium
  - Ⓢ Large
  - Modified Type D Inlets
  - ⊗ Sediment Basins impacted by Project construction
- Proposed Control Measures**
- Sediment Basins
- Ⓟ Small
  - Ⓛ Medium
  - Ⓢ Large
  - Slope Revegetation
  - Vegetated Berms
  - Shoulder Paving
  - Modified Type D Inlets
  - ⊕ Polishing Wetlands
  - Coir Logs
  - Valley Pan/Gutter
  - Ditches/Swales
  - Drainage Rundowns
  - ⊗ Clean Water Diversions

\* Infrastructure and environmental layers shown are from the EA (CDOT, 2020f).



**WEST VAIL PASS SCAP MAPBOOK**  
 I-70 West Vail Pass Safety and Operations Improvements  
 Sediment Control Action Plan  
 Eagle County, Colorado

Site Location: Eagle County, Colorado

Data Sources: XXX

Drawn By: JAF

Page of

Pinyon Project Number: I/20-0670-02; CDOT Project Number XXX

Reviewed By: MJS/HH

Date: 9/24/2021

Document Path: Z:\PROJECTS\2020\I20067002 Vail Pass Final Design\Figures\ArcPro\Vail Pass.aprx

Service Layer Credits: World Topographic Map: County of Eagle, Bureau of Land Management, Esri, HERE, Garmin, USGS, NGA, EPA, USDA, NPS  
 USA NAIP Imagery: Natural Color: Esri, USDA Farm Service Agency